

TOTS & TUNES ON SHABBAT



AT TEMPLE EMETH

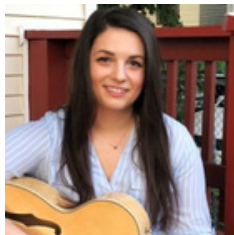


Shabbat morning:
10:30 -11:15 am

April 13, May 11, June 8, 2024

A joyful Shabbat experience

FOR YOUNG FAMILIES
WITH CHILDREN AGES 0-4 YEARS



BETH IS A BOARD-CERTIFIED MUSIC THERAPIST (MT-BC). SHE HOLDS ADVANCED TRAINING CERTIFICATION IN NEUROLOGIC MUSIC THERAPY (NMT) AND EARNED THE DISTINCTION OF NEUROLOGIC MUSIC THERAPY FELLOW. BETH IS AN EXPERIENCED EARLY CHILDHOOD MUSIC THERAPIST SERVING THE GREATER BOSTON AREA.

MUSICAL SHABBAT PROGRAM
LED BY BETH KATZ, MMT, MT-BC, NMT Fellow

All are welcome. [Please Register Online](#)